

6.

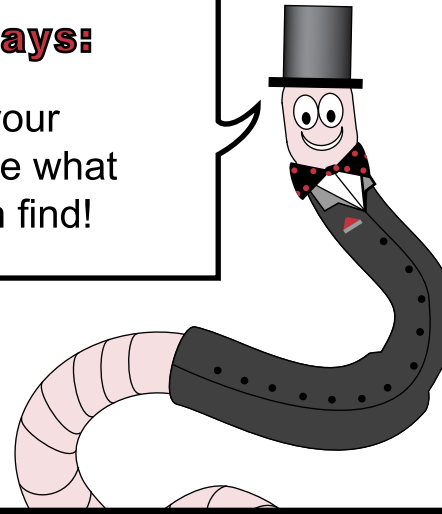
HOME SWEET COMPOST

What's living in the compost heap?

A compost heap will be home to many different animals (not just Wellington Worm!). Some, like bacteria and fungi, are essential to the composting process and some make their home in the heap because it is warm and damp. Some animals will use a compost heap as a nice warm place to hibernate in the winter.

Wellington says:

Have a look in your compost and see what animals you can find!



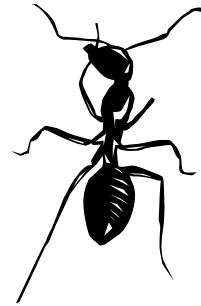
Mice



Woodlice



Ants



Toads



Garden spiders



Slugs & snails



Beetles

